

F-SERIES SUPER DUTY® PICKUP

2010
BUILT
Ford
TOUGH



F-SERIES SUPER DUTY® PICKUP



TOWS UP TO 24,600 LBS!

F-350 LARIAT Crew Cab DRW 4x2 in Black/Ingot Silver Two-Tone with available equipment

Natural BORN LEADER

Muscular sheet metal wrapped around an incredibly strong structure alerts you to the **huge capabilities** on tap. **Best-in-class² towing and payload**, and the might of an available **6.4L Power Stroke® V8 Turbo Diesel** are just 2 of its many strengths. The cab offers **comfort that's unique** in the world of heavy-duty pickups. And no other truck in the class offers so many innovations to make work easier. Super Duty is part of **America's best-selling line of trucks for 32 years running: Ford F-Series.**

*Maximum capability when properly equipped. See your Ford Dealer for specific equipment and other limitations. ²Best-in-class payload and towing, GVWR and GCWR when properly equipped. Class is Full-size Pickups over 8500 lbs. GVWR. Based on comparison of 2009 competitive models.

Vehicles throughout this catalog may be shown with optional and aftermarket upfit equipment.

THE MOST CAPABLE PICKUP IN NORTH AMERICA²

- BEST-IN-CLASS 5th-Wheel Towing
- BEST-IN-CLASS Conventional Towing
- BEST-IN-CLASS Payload
- BEST-IN-CLASS Gas Torque 6.8L 3-Valve V10 Engine
- EXCLUSIVE PowerScope™ Power-Telescoping/Folding Trailer Tow Mirrors
- EXCLUSIVE Tailgate Step
- EXCLUSIVE Stowable Bed Extender
- EXCLUSIVE Rapid-Heat Supplemental Cab Heater
- EXCLUSIVE Quiet Steel® Dash Panel
- EXCLUSIVE Standard Box-Rail Moldings
- EXCLUSIVE ToughBed® Factory-Installed Spray-In Bedliner (available Fall 2009)
- EXCLUSIVE Standard Built Ford Tough® Hitch Receivers — All Models
- EXCLUSIVE Upfitter Switches
- EXCLUSIVE F-450 Pickup



F-450 XLT Crew Cab 4x4 in Ingot Silver with available equipment

Tow in **CONTROL** with Ford Technology

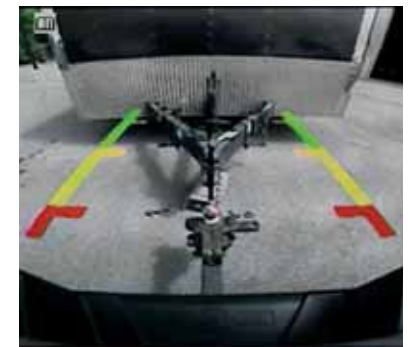
The first fully **integrated Trailer Brake Controller (TBC)**¹ in the class **1** works in conjunction with the **Anti-lock Brake System (ABS)** **2** to balance the truck's braking power with electrically actuated trailer brakes. The **TorqShift® automatic transmission** **3** includes Tow/Haul Mode to match transmission operation to the demands of towing and hauling. **Telescoping trailer tow mirrors** **4** help give you a clear rear view for towing a king-size trailer. Developed and refined, these advanced factory-installed towing systems help you **tow with confidence**.

¹TBC verified to be compatible with electrically actuated drum brakes only.



TRAILER BRAKE CONTROLLER

This optional device uses braking input, vehicle speed and ABS logic to balance the performance of the truck brakes and electric trailer brakes. A user-friendly display in the instrument cluster message center indicates output, gain levels and trailer connection status. The system also has a disconnect alarm with message center warnings.



REAR VIEW CAMERA

This option takes the full-color image from a camera mounted in the tailgate and displays it in your auto-dimming rearview mirror or on the available Navigation System's 6.5" screen (shown). Just shift into reverse for a wide-angle view behind the truck. The video display's built-in distance guide is ideal for trailer hookups.



F-450 KING RANCH® Crew Cab 4x4 in Forest Green/Pueblo Gold Two-Tone with available equipment

WORK made easier

When a truck can haul **best-in-class payload**¹, it only makes sense that it can help you **load, access and manage** that payload as well. And **no competitor does it better.**

A. CLASS-EXCLUSIVE TOUGHBED® SPRAY-IN BEDLINER

This factory-installed synthetic lining is applied directly to the bed surface for durable, long-lasting protection. Available Fall 2009.

B. CLASS-EXCLUSIVE STOWABLE BED EXTENDER

This rugged, optional barrier lets you haul with the tailgate down or secure smaller loads with the tailgate up. It folds conveniently out of the way when not in use.

C. CLASS-EXCLUSIVE TAILGATE STEP

A handy option that stows in the tailgate. Just take hold of the flip-up grab bar, flip down the skid-resistant step, and climb up into the box.

BUILT FORD TOUGH® HITCH RECEIVERS

Every Super Duty pickup comes with a hitch receiver matched to the truck's capabilities. 7-pin and 4-pin electrical connection outlets are included; draw bars and accessories are sold separately.

SMART amenities



A. FLAT STEEL LOADFLOOR

XLT Crew Cabs and above feature a standard FlexFold rear seat with a steel loadfloor. A multitude of configurations set the stage for practicality and versatility.

B. DUAL-ZONE ELECTRONIC AUTOMATIC TEMPERATURE CONTROL

Front-seat passengers can set their own personal comfort level with Dual-zone Electronic Automatic Temperature Control.

C. AUXILIARY AUDIO INPUT JACK

All Super Duty CD audio systems feature an auxiliary audio input for any compatible MP3 player (shown with available Ford SYNC®).

D. CENTER CONSOLE

Optional bucket seats include a deep center console that can easily hold a laptop or store files from integrated hanging racks.

RAPID-HEAT SUPPLEMENTAL CAB HEATER

An electric heating system that automatically helps raise cabin temperature to a comfortable level. It's optional on diesel engine trucks equipped with air conditioning and alternator upgrade.

POWER-SLIDING MOONROOF

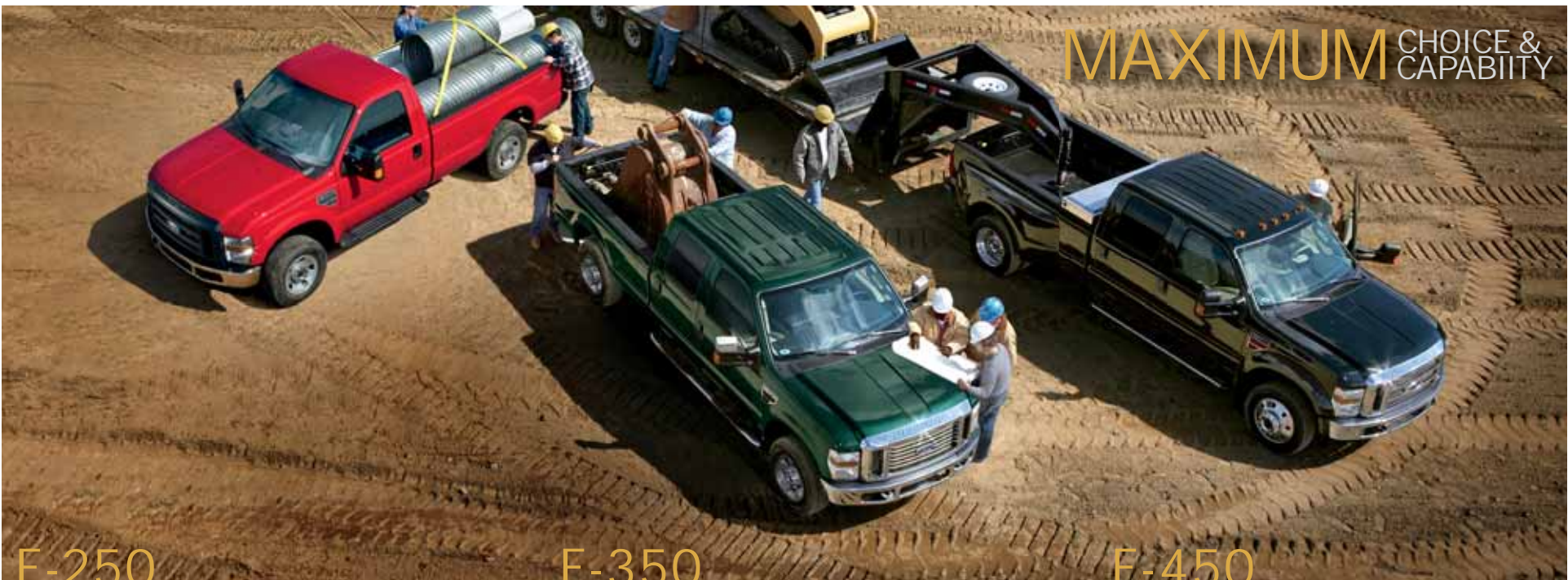
An available tinted-glass panel slides open or tilts forward to let in just the right amount of air and sun. Includes an integrated sunshade.

MEMORY POWER-ADJUSTABLE PEDALS

Available on select packages, these pedals memorize positions for 2 different drivers.

XLT Crew Cab with New Optional Leather-Trimmed 40/20/40 Split Front Seat, Standard FlexFold® 60/40 Split Rear Bench in Premium Vinyl and available equipment





F-250

Maximum capabilities:

5th-Wheel Towing: 16,500 lbs.
 Conventional Towing: 12,500 lbs.
 Payload: 3220 lbs.
 GCWR: 23,000 lbs. • GVWR: 10,000 lbs.
 Front GAWR: 5250 lbs. (4x2); 6000 lbs. (4x4)

Equipment configurations:

Engines: 5.4L Gas V8, 6.8L Gas V10, 6.4L Power Stroke® V8
 Drivelines: 4x2 or 4x4 • Single Rear Wheel Only
 Bodies: Regular Cab, SuperCab, Crew Cab • 6¾' Box, 8' Box
 Trim Series: XL, XLT, Cabela's®, LARIAT
 Appearance Packages:
 XL Décor, Chrome, KING RANCH®, Ford Harley-Davidson™

F-350

Maximum capabilities:

5th-Wheel Towing: 18,800 lbs.
 Conventional Towing: 15,000 lbs.
 Payload: 5730 lbs.
 GCWR: 26,000 lbs. • GVWR: 13,000 lbs.
 Front GAWR: 5250 lbs. (4x2); 6000 lbs. (4x4)

Equipment configurations:

Engines: 5.4L Gas V8, 6.8L Gas V10, 6.4L Power Stroke V8
 Drivelines: 4x2 or 4x4 • Single Rear Wheel or Dual Rear Wheel
 Bodies: Regular Cab, SuperCab, Crew Cab • 6¾' Box, 8' Box
 Trim Series: XL, XLT, Cabela's, LARIAT
 Appearance Packages: XL Décor, Chrome, KING RANCH,
 Ford Harley-Davidson™

F-450

Maximum capabilities:

Record 5th-Wheel Towing: 24,600 lbs.
 Record Conventional Towing: 16,000 lbs.
 Record Payload: 6180 lbs. • Record GCWR: 33,000 lbs.
 Record GVWR: 14,500 lbs. • Record Front GAWR: 6500 lbs.

Equipment configurations:

Engine: 6.4L Power Stroke V8 Only
 Drivelines: 4x2 or 4x4 • Dual Rear Wheel Only
 Body: Crew Cab 8' Box Only
 Trim Series: XL, XLT, LARIAT
 Appearance Packages: XL Décor, Chrome, KING RANCH,
 Ford Harley-Davidson™

NOTE: Ratings shown are maximum available for the model when properly equipped. Specific capabilities vary by final vehicle configuration. See your Ford Dealer for ordering details.



F-350 XLT Crew Cab SRW 4x4 in Dark Blue Pearl with Chrome Package and other available equipment

MAXIMUM VERSATILITY: Available with every cab, engine and driveline

SUPER DUTY XLT

Includes XL standard features, plus: Integrated Trailer Brake Controller • Manual trailer tow mirrors with power heated glass • Chrome grille with Medium Platinum insert • Cast-aluminum, painted steel or forged polished-aluminum wheels • Chrome bumpers • AM/FM stereo/single-CD player with MP3 capability • Power windows • Cruise control • Cloth seats • 40/20/40 split front seat • Fold-up rear bench (SuperCab) • FlexFold® 60/40 split rear seat (Crew Cab) • Remote keyless entry • Perimeter alarm • And more

XLT Crew Cab with Cloth Seats, Center Console and available equipment





Ford F-Series Cabela's F-350 Crew Cab in Forest Green/Sterling Grey Two-Tone with available equipment



BUILT FORD TOUGH® for the great outdoors

CABELA'S®

Includes XLT standard features, plus: Unique two-tone exterior paint • Accent-color wheel-lip moldings • Cloth seats • Front seats with center console and stitched Cabela's logo on the seatbacks • 60/40 split fold-up rear seat with lockable underseat stowage¹ • SIRIUS® Satellite Radio² with complimentary 6-month subscription • 6" painted angular step bars • Unique hub caps • Bed mat/ tailgate badge with Cabela's logo • Optional heated leather-trimmed front seats • And much more

¹Obey all federal, state and local regulations when transporting firearms. ²Service only available in the 48 contiguous United States and the District of Columbia.

Underseat Storage



Optional Cabela's Luxury Leather-Trimmed Interior





| F-350 LARIAT Crew Cab DRW 4x4 in Black with PowerScope™ Mirrors and available equipment |

A VERY rewarding experience

LARIAT

Includes XLT standard features, plus: Premium forged-aluminum or forged polished-aluminum wheels • PowerScope Trailer Tow Mirrors • Ford SYNC® voice-activated communications and entertainment system¹ • Premium leather-trimmed power, heated front seats with center console • Premium vinyl fold-up rear bench (SuperCab) or premium leather-trimmed FlexFold® 60/40 split rear bench (Crew Cab) • Dual-zone Electronic Automatic Temperature Control • Leather-wrapped steering wheel with secondary audio controls • Power-sliding rear window with privacy glass • And much more

¹Driving while distracted can result in loss of vehicle control. Only use mobile phones and other devices, even with voice commands, when it is safe to do so.

| LARIAT Crew Cab with Ebony Leather-Trimmed Front Seats and available equipment |





F-450 KING RANCH® Crew Cab 4x4 in Forest Green/Pueblo Gold Two-Tone with available equipment



The SPIRIT of the West

KING RANCH

Includes LARIAT standard features, plus: KING RANCH-branded, Chaparral leather-trimmed seats • Power front seats with center console and FlexFold® 60/40 split rear seat • Memory power-adjustable pedals • Premium Sound System AM/FM stereo/6-disc in-dash CD/MP3 and 8 speakers with subwoofer • Rear View Camera • Universal Garage Door Opener • Chrome grille with Pueblo Gold insert • Unique wheels • Two-tone paint with Pueblo Gold lower accent • Pueblo Gold illuminated cab steps, box-rail/tailgate top moldings and bumpers • Body-color mirror caps • KING RANCH badges with "Running W" brand • And much more

KING RANCH Instrument Panel with available equipment





Ford Harley-Davidson™ F-450 Crew Cab DRW 4x4 in Black with Optional Tuxedo Black Flames and available equipment



Detroit IRON and Milwaukee SOUL

FORD HARLEY-DAVIDSON™

F-SERIES SUPER DUTY

Includes LARIAT standard features, plus: Black Monotone with high-line tape stripes, or optional Black with Tuxedo Black Flames and dimensional chrome boxside lettering • Billet-style grille insert • Illuminated Black molded running boards with stainless steel inserts • Polished/painted forged-aluminum wheels • Unique Black leather-trimmed front seats and center console with chrome Bar & Shield logo badges • FlexFold 60/40 split rear bench with chrome Bar & Shield logo badges • Premium Sound System AM/FM stereo/6-disc in-dash CD/MP3 and 8 speakers with subwoofer • Unique memory power-adjustable performance pedals • Rear View Camera • Universal Garage Door Opener • And much more (diesel engine only)

Unique Interior with Black Leather Trim



F-SERIES SUPER DUTY® PICKUP



KING RANCH® Crew Cab with available equipment



NO other TRUCK COMPARES¹

Super Duty® rewrites the rules for **capability and comfort** with top-quality materials and refinement. And it's available with **technologies and upgrades** to help you through your day.

YOU TALK. SYNC LISTENS.™

FORD SYNC® GETS NEW 911 ASSIST™ PLUS TRAFFIC, DIRECTIONS AND INFORMATION

Available Ford SYNC, developed in conjunction with Microsoft®, works with your paired Bluetooth®-enabled mobile phone and digital media player or thumb drive to make calls, play music and more – all with the touch of a button and simple voice commands.² With 911 Assist, the system can make an emergency call from your phone if any airbag has deployed.³ And now, SYNC features these convenient Driver Services:

Turn-by-turn directions⁴ • Vehicle Health Reports • Up-to-the-minute weather⁴ • Traffic alerts⁴ • Business searches⁴ • Personalized business, sports and entertainment news⁴

For all the latest details, visit SyncMyRide.com.

SIRIUS® SATELLITE RADIO

Available SIRIUS Satellite Radio⁵ comes with a 6-month trial subscription to get you started surfing over 130 channels of sports, news, entertainment and 100% commercial-free music, coast-to-coast.

NAVIGATION WITH SIRIUS TRAVEL LINK™

Easy voice activation for everything from driving directions to accessing tunes. Displayed on a bright 6.5" LCD touch screen, the available Navigation System also provides nearly 10 gigabytes of storage space for your photos and music (up to 2400 songs). Class-exclusive SIRIUS Travel Link⁶ comes with a 6-month trial subscription to keep you in the know with up-to-the-minute local traffic, weather, fuel prices, sports scores and movie listings and showtimes. All at your fingertips.

¹Unless it's a Ford. ²Driving while distracted can result in loss of vehicle control. Only use mobile phones and other devices, even with voice commands, when it is safe to do so. ³The vehicle's electrical system (including the battery), the wireless service provider's signal, and a connected mobile phone must all be available and operating for 911 Assist to function properly. These systems may become damaged in a crash. The paired mobile phone must be turned on, connected to SYNC, and the 911 Assist feature enabled in order for 911 to be dialed. ⁴SYNC with Traffic, Directions and Information available Summer 2009. These SYNC services not available with SIRIUS Travel Link or Navigation System. See your dealer for details. ⁵SIRIUS is a registered trademark of SIRIUS XM Radio Inc. Subscriptions governed by SIRIUS Terms and Conditions at sirius.com/serviceterms. Real-time traffic monitoring available in select markets. Some features are unavailable while driving. Service only available in the 48 contiguous United States and the District of Columbia.

FORD WORK SOLUTIONS Work even **SMARTER**

SMART TOOLS FOR TOUGH TRUCKS

Only the **toughest name in trucks** could assemble this all-star lineup. From **communications and computing to navigation, fleet tracking and security**, every position is filled by a pro.

A. MOBILE-OFFICE COMPUTING POWER

The available Internet-capable in-dash computer, featuring a Windows® CE operating system, is the heart of Ford Work Solutions.¹ Use the wireless keyboard to create spreadsheets and other documents, download files from the web via the Sprint® Mobile Broadband Network² – even print them when you add the available wireless printer. Full-function hands-free calling and turn-by-turn navigation from Garmin® is also included. Your office has truly gone mobile.³

B. CABLE LOCK

It's a sure way to wreck a thief's day. This rugged, retractable, 10-ft. vinyl-coated, braided-steel cable spools out of a case mounted right in your cargo box. Snake it through tool handles and equipment frames to secure them in the box. Clip the heavy-duty locking shackle to any cargo box tie-down or back onto the cable itself. With the optional Ford Work Solutions Cable Lock by Master Lock®, your gear is secured, yet easy to access.

C. TOOL LINK™

Ford Work Solutions Tool Link,⁴ developed with DeWALT®, uses Radio Frequency Identification (RFID) technology to track your tools. Use it to check the truck before you leave for a job, making sure you have what you need, then check again at the end of the workday to see that all your gear is on board. It can save you time and frustration – the perfect workmate.

CREW CHIEF™ (not pictured)

Put available Crew Chief telematics devices on your fleet trucks, and you can track 'em, 24/7. Just pull up the website using the Ford Work Solutions in-dash computer in your truck, or any computer with web access. Crew Chief, offered by Microlise™, shows which truck is closest to the job you need done. It can also provide information that's vital to the life of your trucks and your profits. Easy-to-use analysis tools⁵ can help you keep your fleet in shape, fuel efficient and green.

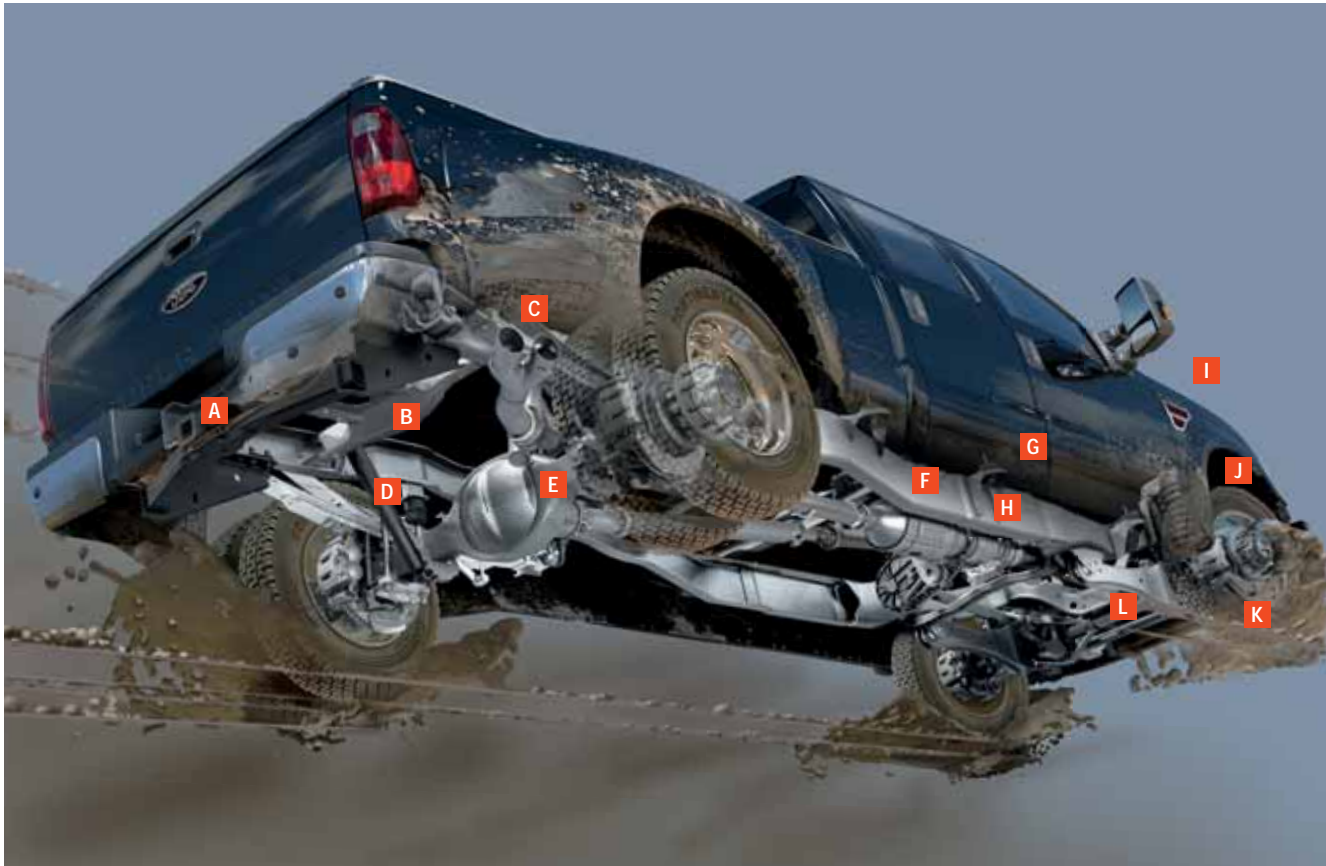


Ford Work Solutions In-Dash Computer with Wireless Keyboard, available Wireless Printer and available equipment



¹Ford Work Solutions include Ford Licensed Accessories. See dealer for limited warranty details. ²Sprint subscription and 1-year agreement required. ³Driving while distracted can result in loss of vehicle control. Only use mobile phones and other devices, even with voice commands, when it is safe to do so. To avoid driving distractions, some functions are disabled while the truck is in motion. ⁴Tool Link RFID system will not read tagged tools in metal tool boxes. ⁵Service fee required.

F-SERIES SUPER DUTY® PICKUP



A. BUILT FORD TOUGH® HITCH RECEIVER

Rated to the truck's capabilities, it's standard on every Super Duty® pickup.

B. RUGGED CROSSMEMBERS

Crossmembers are riveted, welded or both to optimize frame capability.

C. LONG REAR SPRINGS

Over 66" in length, they help manage torque without compromising comfort.

D. STAGGERED REAR SHOCKS

They help control axle motions for a smooth ride and confident handling — loaded or unloaded.

E. REAR SUSPENSION

The Hotchkiss design allows model-specific spring and axle ratings for a wide range of capacities. Max. GVWRs range from 8800 lbs. to 14,500 lbs. Max. GCWRs range from 15,000 lbs. all the way up to 33,000 lbs.

F. THICK C-CHANNEL FRAME

Steel C-channel up to 6.7-mm thick is one reason Super Duty delivers best-in-class payload and towing. Electrocoating promotes corrosion resistance.

G. MICRO-CELLULAR URETHANE BODY MOUNTS

These compress proportionally to the load for controlled body motions and a comfortable ride.

H. BODY-TO-FRAME MOUNTING BOLTS

Driven from the bottom up, this is a feature many aftermarket builders find desirable.

I. ENGINE TRACTION CONTROL

This optional driver-selectable function can automatically step in to reduce power when it detects a loss of traction.

J. BEST TURNING DIAMETER

F-450 Wide-Track 4x4 Pickup boasts the best Crew Cab Long Box turning diameter of any truck in its class.

K. OUTSTANDING BRAKING POWER

The standard 4-wheel Anti-lock Brake System (ABS) has huge vented rotors and dual-piston calipers to provide strong, consistent stops, even when moving the biggest loads.

L. LARGEST FRONT CONTROL ARMS

These support best-in-class maximum front GAWRs of 6500 lbs. on F-450 4x4, and 6000 lbs. on F-450 4x2.

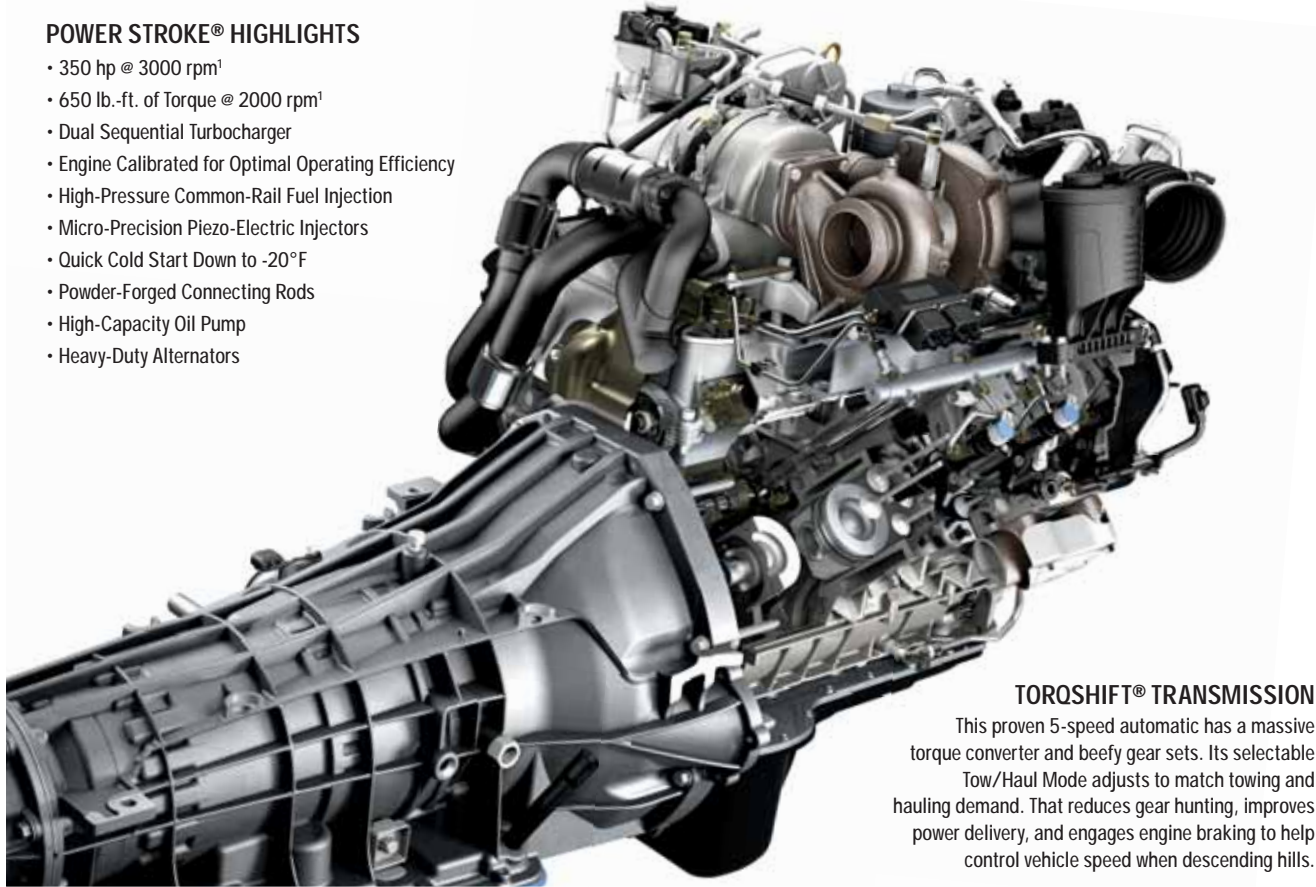
RELY on PROVEN STRENGTH

Only a foundation engineered and built like this can deliver **true Super Duty capability**. And it's a key component in legendary Ford durability, keeping **more trucks on the road with over 250,000 miles than any other brand**.¹ It's also tuned to deliver the **quiet ride, stable handling**, and road-going performance that's unique to Ford trucks.

¹Based on vehicle registration data and latest odometer readings available to R. L. Polk & Co. for 1992 and newer model year full-size pickups and vans still on the road in the U.S. as of April 2008.

POWER STROKE® HIGHLIGHTS

- 350 hp @ 3000 rpm¹
- 650 lb.-ft. of Torque @ 2000 rpm¹
- Dual Sequential Turbocharger
- Engine Calibrated for Optimal Operating Efficiency
- High-Pressure Common-Rail Fuel Injection
- Micro-Precision Piezo-Electric Injectors
- Quick Cold Start Down to -20°F
- Powder-Forged Connecting Rods
- High-Capacity Oil Pump
- Heavy-Duty Alternators



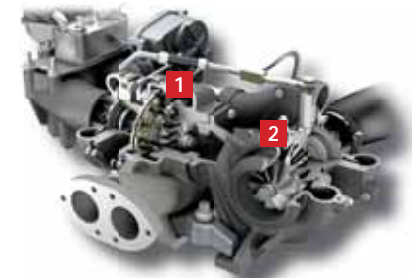
TORQSHIFT® TRANSMISSION

This proven 5-speed automatic has a massive torque converter and beefy gear sets. Its selectable Tow/Haul Mode adjusts to match towing and hauling demand. That reduces gear hunting, improves power delivery, and engages engine braking to help control vehicle speed when descending hills.



CLASS-EXCLUSIVE GAS POWER CHOICES

Only Super Duty offers you different gas power solutions to suit your needs – including a 5.4L V8 or the only optional 6.8L V10 gas powerplant in the class (above). Manual or automatic transmissions are available on select models.



POWER STROKE'S DUAL SEQUENTIAL TURBOS

This advanced turbocharging system delivers the power to flatten any mountain pass. The high-pressure Electronic Variable Response Turbo (EVRT®) **1** spools up first to provide fast transient engine response. The larger low-pressure turbo **2** provides added airflow at peak power and torque. With excellent transient response, outstanding low-speed torque and rugged durability, you can expect seamless performance from one end of the tachometer to the other.

Choose your **POWER**

6.4L 32-VALVE POWER STROKE V8 TURBO DIESEL

For **serious diesel power**, sign up here. High-pressure common-rail fuel injection helps deliver 100% of its **650 lb.-ft. of torque¹** at just 2000 rpm, and optimizes cold-start capability. This is also the **quietest Ford truck diesel** yet. Ford Clean Diesel Technology™ helps reduce particulate emissions to meet stringent federal standards.

¹Governed at 325 hp @ 3000 rpm and 600 lb.-ft. of torque @ 2000 rpm on F-450.

PICKUP DIMENSIONS

EXTERIOR	REGULAR CAB	SUPERCAB		CREW CAB	
	4x2/4x4	SWB 4x2/4x4	LWB 4x2/4x4	SWB 4x2/4x4	LWB 4x2/4x4
A. Height – F-250 SRW (w/o options)	75.9"/79.2"	76.4"/79.4"	76.2"/79.4"	77.2"/79.9"	76.7"/79.9"
A. Height – F-350 SRW (w/o options)	76.0"/80.2"	76.5"/80.6"	76.3"/80.4"	77.0"/81.1"	76.8"/80.9"
A. Height – F-350 DRW (w/o options)	76.1"/79.4"	–	76.5"/79.6"	–	77.0"/80.1"
A. Height – F-450 DRW (w/o options)	–	–	–	–	79.8"
B. Overall width – SRW (excl. mirrors)	79.9"	79.9"	79.9"	79.9"	79.9"
B. Overall width – DRW (excl. mirrors)	95.7"	–	95.7"	–	95.7"
B. Overall width – With standard mirrors	99.6"	99.6"	99.6"	99.6"	99.6"
C. Ground clearance – F-250 SRW	7.0"/7.8"	7.0"/7.8"	7.0"/7.8"	7.0"/7.8"	7.0"/7.8"
C. Ground clearance – F-350 SRW	7.0"/7.8"	7.0"/7.8"	7.0"/7.8"	7.0"/7.8"	7.0"/7.8"
C. Ground clearance – F-350 DRW	7.1"/7.5"	–	7.1"/7.4"	–	7.1"/7.4"
C. Ground clearance – F-450 DRW	–	–	–	–	7.8"
D. Loadfloor height – F-250 SRW	33.9"/34.4"	33.9"/34.5"	33.9"/34.5"	33.8"/34.5"	33.7"/34.5"
D. Loadfloor height – F-350 SRW	34.0"/37.2"	34.1"/37.3"	34.0"/37.2"	34.0"/37.2"	33.9"/37.2"
D. Loadfloor height – F-350 DRW	34.4"/35.0"	–	34.4"/35.1"	–	34.3"/35.1"
D. Loadfloor height – F-450 DRW	–	–	–	–	35.1"
E. Cargo box height	20.0"	20.1"	20.0"	20.1"	20.0"
F. Overall length	227.0"	231.8"	248.0"	246.2"	262.4"
G. Overhang – Rear	52.4"	52.4"	52.4"	52.4"	52.4"
H. Wheelbase	137.0"	141.8"	158.0"	156.2"	172.4"
I. Overhang – Front	37.6"	37.6"	37.6"	37.6"	37.6"
J. Angle of departure – F-250 SRW	16.4°/17.3°	16.4°/17.3°	16.2°/17.3°	16.3°/17.4°	16.2°/17.4°
J. Angle of departure – F-350 SRW	16.6°/20.3°	16.5°/20.2°	16.3°/20.2°	16.4°/20.2°	16.3°/20.2°
J. Angle of departure – F-350 DRW	17.0°/17.9°	–	16.8°/17.9°	–	16.7°/17.9°
J. Angle of departure – F-450 DRW	–	–	–	–	17.9°
K. Ramp breakover angle – F-250 SRW	13.7°/18.1°	13.1°/17.7°	11.6°/15.9°	11.8°/15.9°	10.9°/14.4°
K. Ramp breakover angle – F-350 SRW	14.3°/20.2°	13.6°/19.3°	12.0°/17.0°	12.1°/17.2°	11.0°/15.6°
K. Ramp breakover angle – F-350 DRW	13.8°/18.8°	–	13.2°/15.5°	–	11.0°/14.4°
K. Ramp breakover angle – F-450 DRW	–	–	–	–	15.2°
L. Angle of approach – F-250 SRW	21.0°/23.5°	21.1°/23.5°	21.2°/23.5°	22.4°/23.5°	21.2°/23.6°
L. Angle of approach – F-350 SRW	21.1°/22.8°	21.1°/22.8°	21.3°/22.9°	21.2°/22.9°	21.3°/22.9°
L. Angle of approach – F-350 DRW	20.9°/23.3°	–	21.0°/23.3°	–	21.1°/23.3°
L. Angle of approach – F-450 DRW	–	–	–	–	22.2°

INTERIOR

Front

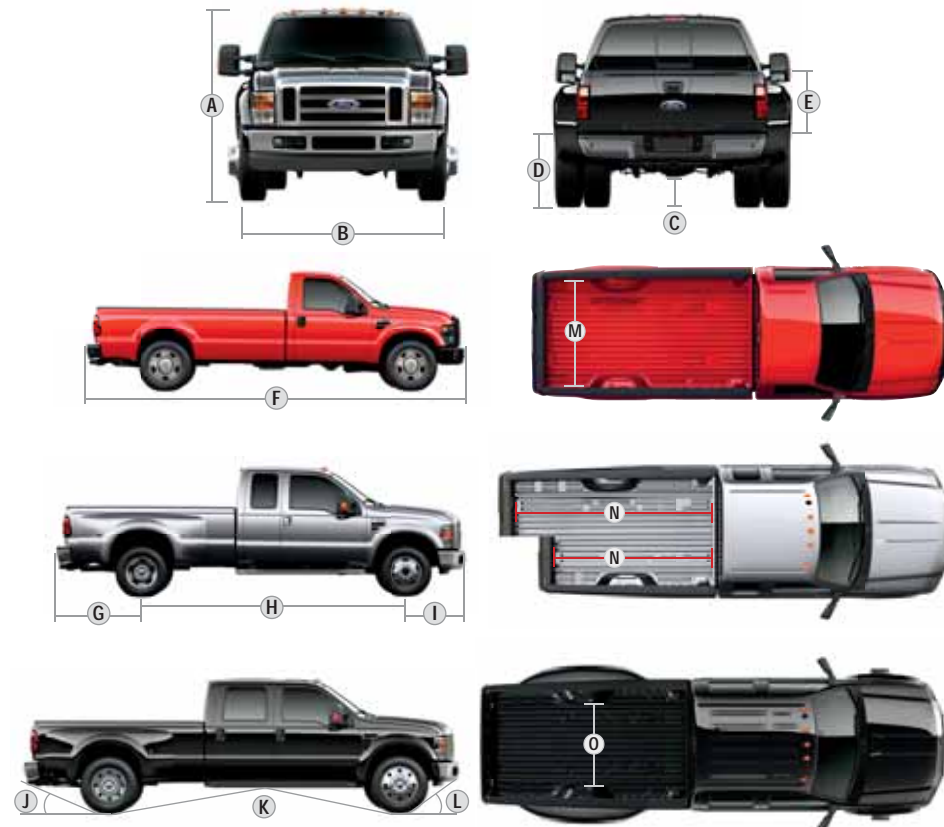
Head room	41.4"	41.4"	41.4"	41.4"	41.4"
Shoulder room	68.0"	68.0"	68.0"	68.0"	68.0"
Hip room	67.6"	67.6"	67.6"	67.6"	67.6"
Leg room	41.0"	41.0"	41.0"	41.0"	41.0"

Rear

Head room	–	38.4"	38.4"	41.4"	41.4"
Shoulder room	–	68.1"	68.1"	68.0"	68.0"
Hip room	–	67.3"	67.3"	67.3"	67.3"
Leg room	–	31.8"	31.8"	41.8"	41.8"

SRW = single rear wheel DRW = dual rear wheel SWB = short wheelbase (6¾' cargo box) LWB = long wheelbase (8' cargo box)

CARGO BOX	REGULAR CAB	SUPERCAB		CREW CAB	
	4x2/4x4	SWB 4x2/4x4	LWB 4x2/4x4	SWB 4x2/4x4	LWB 4x2/4x4
Volume (cu. ft.)	77.4	64.4	77.4	64.4	77.4
M. Width at floor (maximum)	69.3"	69.3"	69.3"	69.3"	69.3"
N. Length at floor	98.0"	81.8"	98.0"	81.8"	98.0"
O. Width at wheelhouse	50.9"	50.9"	50.9"	50.9"	50.9"



¹Always wear your safety belt and always deactivate the passenger airbag when using a rear-facing child-safety seat with Regular Cab and SuperCab models. Always wear your safety belt and always secure children in the rear seat in Crew Cab models. ²SOS hardware may become damaged or the battery may lose power in a crash, which could prevent operation. Not all crashes will activate an airbag or safety belt pretensioner. ³Under normal driving conditions with routine fluid and filter changes. ⁴Final-stage manufacturer must supply control switches. ⁵4L/6-speed manual. ⁶8L/6-speed manual. ⁷5.4L/TorqShift® 5-speed automatic. ⁸6.8L/TorqShift 5-speed automatic. ⁹6.4L/TorqShift 5-speed automatic. ¹⁰6.4L/6-speed manual. ¹¹Governed at 325 hp @ 3000 rpm and 600 lb.-ft. of torque @ 2000 rpm on F-450.

PICKUP STANDARD FEATURES

SAFETY/SECURITY

4-wheel power disc brakes with Anti-lock Brake System (ABS)
 Airbags¹ – Driver and right-front-passenger
 Alert chimes – Headlamps-on, key-in-ignition and door ajar
 Belt-Minder[®] front safety belt reminder
 Brake/shift interlock (with automatic transmission)
 Child-safety-seat top tether anchors (Regular Cab front passenger and all rear-seat positions)
 Fuel pump inertia shutoff switch
 Height-adjustable safety belts – Front-outboard positions
 Locking tailgate
 Passenger airbag deactivation switch (Regular Cab, SuperCab)
 Safety belt energy-management retractors – Front-outboard positions
 Side-intrusion door beams
 SOS Post-Crash Alert System[™]²
 Spare tire/wheel lock
 Tire Pressure Monitoring System (SRW only; excludes spare)

MECHANICAL

5.4L SOHC 3-valve V8 engine (F-250, F-350)
 6.4L OHV 32-valve Power Stroke[®] V8 Turbo Diesel engine (F-450)
 6-speed manual overdrive transmission (restrictions apply)
 90,000-mile tune-up interval³ (gas engines)
 Battery saver
 Fail-safe engine cooling system (gas engines)
 Fuel tank – 30.5-gallon capacity with 6¾' box; 38-gallon capacity with 8' box
 Manual 4-wheel-drive system with manual locking hubs (4x4 models only)
 Power steering
 Quick-release tailgate with Tailgate Assist
 Securilock[®] passive anti-theft ignition system
 Spare tire/wheel/jack – Conventional with underframe carrier (crank-down type)
 Stabilizer bar – Front
 Stabilizer bar – Rear (DRW only)
 Stainless steel exhaust system (major components)
 Stationary Elevated Idle Control (SEIC)⁴
 Steering damper
 Styleside box

INTERIOR

Assist and ride handles
 Coat hooks – 1 (Regular Cab); 2 in rear of cab (SuperCab and Crew Cab)
 Dome light (front and rear with Crew Cab)
 Flip-open rear quarter windows (SuperCab)
 Message center with odometer, trip odometer, engine-hour meter and warning messages
 Power points – 2 on instrument panel
 Steering wheel – Black urethane

EXTERIOR

Bumpers – Front step and rear step
 Cargo box – Partitionable and stackable
 Cargo box lamp – Integrated with center high-mounted stop lamp
 Cargo box rail and tailgate top moldings
 Cargo box stake pockets
 Cargo tie-down hooks – 4 in 6¾' box; 6 in 8' box
 Solar-tinted glass
 Tow hooks – 2 in front
 Trailer hitch receiver – 12.5K (2") Built Ford Tough[®] (SRW/F-350 DRW 5.4L)
 Trailer hitch receiver – 15K (2½") Built Ford Tough (F-350 DRW 6.8L/6.4L only)
 Trailer hitch receiver – 16K (2½") Built Ford Tough (F-450 only)
 Trailer tow – 7-/4-pin connector and trailer brake wiring kit (in-cab, no controller)
 Windshield wipers – Intermittent

PICKUP MAXIMUM PAYLOAD

GVWR RATINGS

F-Series Super Duty[®] models maintain near-maximum payload capacity even when a larger cab or engine is selected.

MAXIMUM PAYLOAD WEIGHT RATINGS (LBS.) – MODEL/WHEELBASE (WB)

	MAX. GVWR (LBS.)	REGULAR CAB					SUPERCAB					CREW CAB					
		137.0" WB	141.1" WB	158.0" WB	156.2" WB	172.4" WB	137.0" WB	141.1" WB	158.0" WB	156.2" WB	172.4" WB	137.0" WB	141.1" WB	158.0" WB	156.2" WB	172.4" WB	
F-250 SRW 4x2	8800	3110 ⁵	—	—	—	—	—	—	—	—	—	—	—	—	—	—	
	9000	3180 ⁶	3090 ⁷	—	—	—	—	—	—	—	—	—	—	—	—	—	
	9200	—	3160 ⁸	3130 ⁷	3080 ⁷	—	—	—	—	—	—	—	—	—	—	—	
	9400	2790 ⁹	—	3200 ⁸	3150 ⁸	3160 ⁷	—	—	—	—	—	—	—	—	—	—	
	9600	—	—	2700 ⁹	—	3220 ⁸	—	—	—	—	—	—	—	—	—	—	
	9800	—	—	—	2780 ⁹	2730 ⁹	—	—	—	—	—	—	—	—	—	—	
10,000	—	—	—	—	2800 ⁹	—	—	—	—	—	—	—	—	—	—		
F-250 SRW 4x4	9000	2890 ⁵	—	—	—	—	—	—	—	—	—	—	—	—	—	—	
	9200	2950 ⁶	2870 ⁵	—	—	—	—	—	—	—	—	—	—	—	—	—	
	9400	—	2930 ⁶	2910 ⁵	2850 ⁵	—	—	—	—	—	—	—	—	—	—	—	
	9600	2550 ¹⁰	—	2980 ⁶	2920 ⁶	2930 ⁵	—	—	—	—	—	—	—	—	—	—	
	9800	—	—	2460 ¹⁰	—	3000 ⁶	—	—	—	—	—	—	—	—	—	—	
	10,000	—	—	—	2540 ¹⁰	2480 ¹⁰	2360 ¹⁰	—	—	—	—	—	—	—	—	—	
F-350 SRW 4x2	10,000	4140 ⁵	3920 ⁷	3760 ⁷	3710 ⁷	3590 ⁷	—	—	—	—	—	—	—	—	—	—	
	10,000	4010 ⁶	3790 ⁸	3630 ⁸	3580 ⁸	3450 ⁸	—	—	—	—	—	—	—	—	—	—	
	10,000	3220 ⁹	2960 ⁹	2840 ⁹	2790 ⁹	2660 ⁹	—	—	—	—	—	—	—	—	—	—	
	10,100	4240 ⁵ /4110 ⁶	4020 ⁷	—	—	—	—	—	—	—	—	—	—	—	—	—	
	10,200	—	3990 ⁸	—	—	—	—	—	—	—	—	—	—	—	—	—	
	10,400	—	—	4160 ⁷	4110 ⁷	—	—	—	—	—	—	—	—	—	—	—	
	10,600	3820 ⁹	—	4230 ⁸	4180 ⁸	4190 ⁷	—	—	—	—	—	—	—	—	—	—	
	10,800	—	—	3760 ⁹	—	4250 ⁸	—	—	—	—	—	—	—	—	—	—	
	11,000	—	—	—	3840 ⁹	3790 ⁹	—	—	—	—	—	—	—	—	—	—	
	11,200	—	—	—	—	3860 ⁹	—	—	—	—	—	—	—	—	—	—	
	F-350 DRW 4x2	11,800	5620 ⁷	—	—	—	—	—	—	—	—	—	—	—	—	—	—
		12,000	5690 ⁸	—	—	—	—	—	—	—	—	—	—	—	—	—	—
12,200		—	—	—	5640 ⁷	—	—	—	—	—	—	—	—	—	—	—	
12,400		5300 ⁹	—	—	5710 ⁸	—	—	—	—	—	—	—	—	—	—	—	
12,600		—	—	—	—	—	—	—	—	—	—	—	—	—	—	—	
12,800		—	—	—	5320 ⁹	—	—	—	—	—	—	—	—	—	—	—	
13,000		—	—	—	—	—	—	—	—	—	—	—	—	—	—	—	
F-350 DRW 4x4		12,000	5390 ⁷	—	—	—	—	—	—	—	—	—	—	—	—	—	—
		12,200	5460 ⁸	—	—	—	—	—	—	—	—	—	—	—	—	—	—
		12,400	—	—	—	5420 ⁷	—	—	—	—	—	—	—	—	—	—	—
		12,600	5060 ¹⁰	—	—	5480 ⁸	—	—	—	—	—	—	—	—	—	—	—
		12,800	—	—	—	—	—	—	—	—	—	—	—	—	—	—	—
	13,000	—	—	—	5080 ¹⁰	—	—	—	—	—	—	—	—	—	—	—	
F-450 DRW 4x2	14,500	—	—	—	—	—	—	—	—	—	—	—	—	—	6180 ⁹		
F-450 DRW 4x4	14,500	—	—	—	—	—	—	—	—	—	—	—	—	—	5830 ¹⁰		

PICKUP POWERTRAIN SPECIFICATIONS

	5.4L 3-VALVE V8	6.8L 3-VALVE V10	6.4L POWER STROKE V8 TURBO DIESEL		5.4L 3-VALVE V8	6.8L 3-VALVE V10	6.4L POWER STROKE V8 TURBO DIESEL
Configuration	SOHC	SOHC	OHV (32-valve)	Cylinders	8	10	8
Fuel injection	Sequential Electronic	Sequential Electronic	High-Pressure Common-Rail	Cylinder-head	Aluminum	Aluminum	Cast iron
Engine control system	Electronic	Electronic	Electronic	Block material	Cast iron	Cast iron	Cast iron
Induction system	Specially tuned	Specially tuned	Series Sequential Turbochargers; charged air cooler	Valve operation	Hydraulic roller	Hydraulic roller	Push rod/rocker arms
Battery	12-volt; 650-CCA/72-amp	12-volt; 650-CCA/72-amp	Dual 12-volt; 750-CCA/78-amp	Camshaft drive	Variable cam timing	Silent chain	Gear
Alternator	157-amp	157-amp	135-amp (Single 200-amp or dual combined 320-amp, optional)	Bore	3.55"	3.55"	3.86"
Cooling system	Pressurized series flow	Pressurized series flow	Pressurized series flow	Stroke	4.16"	4.16"	4.13"
				Compression ratio	9.8:1	9.2:1	17.5:1
Horsepower/rpm	300 @ 5000	362 @ 4750	350 @ 3000 ¹¹	Torque lb.-ft./rpm	365 @ 3750	457 @ 3250	650 @ 2000 ¹¹
				Recommended fuel	Unleaded	Unleaded	Ultra-Low-Sulfur Diesel

*See previous page for footnotes and other restrictions.

PICKUP FEATURES & OPTIONS

XL				
XLT				
CABELA'S®				
LARIAT				
MECHANICAL				
●	●	●	●	5.4L SOHC 3-valve V8 engine (n/a on F-350 DRW Crew Cab)
○	○	○	○	6.8L SOHC 3-valve V10 engine (standard on F-350 DRW Crew Cab)
○	○	○	○	6.4L OHV 32-valve Power Stroke® V8 Turbo Diesel engine (standard on F-450)
●	●	●	●	TorqShift® 5-speed automatic overdrive transmission with Tow/Haul Mode (standard on Cabela's, LARIAT and F-350 DRW)
○	○	○	○	Electronic Shift-On-the-Fly (ESOF) 4-wheel-drive system with auto/manual locking hubs (4x4 models only)
●	—	—	—	17" argent-painted steel wheels — 5 (F-250); 5 (F-350 SRW)
●	●	—	—	17" argent-painted steel wheels — 7 (F-350 DRW)
—	●	—	—	17" 5-spoke cast-aluminum wheels — 4 (F-250)
—	○	—	●	17" forged polished-aluminum wheels — 4 (F-350 DRW)
●	—	—	—	18" argent-painted steel wheels — 4 (F-350 SRW)
—	●	●	—	18" bright machined cast-aluminum wheels — 4 (optional on F-250 XLT; standard on F-350 SRW XLT)
—	—	—	●	18" premium forged-aluminum wheels — 4 (F-250/F-350 SRW)
●	●	—	●	19.5" forged polished-aluminum wheels — 4 (F-450)
—	●	○	○	20" forged polished-aluminum wheels — 4 (F-250/F-350 SRW 4x4 diesel engine only; SuperCab and SuperCrew only)
—	—	—	●	20" KING RANCH® premium painted forged-aluminum wheels — 4 (F-250/F-350 SRW 4x4 only; requires KING RANCH Package)
●	●	—	—	LT245/75R17 all-season BSW tires — 5 (F-250)
○	—	—	—	LT245/75R17 all-terrain BSW tires — 5 (F-250)
○	○	—	—	LT265/70R17 all-terrain BSW tires — 5 (F-250)
—	○	—	—	LT265/70R17 all-terrain OWL tires — 4 (F-250)
●	—	—	—	LT245/75R17 all-season BSW tires — 5 (F-350 SRW)
○	—	—	—	LT265/70R17 all-terrain BSW tires — 5 (F-350 SRW)
—	○	—	●	LT275/65R18 all-season BSW tires — 5 (F-250 4x2)
—	○	—	●	LT275/70R18 all-season BSW tires — 5 (F-250 4x4)
—	○	—	○	LT275/70R18 all-terrain BSW tires — 4 (F-250 4x4)
○	○	—	○	LT275/70R18 all-terrain BSW tires — 4 (F-350 SRW 4x4)
—	○	●	○	LT275/70R18 all-terrain OWL tires — 4 (F-250/F-350 SRW 4x4)
—	—	—	○	LT275/65R20 all-terrain BSW tires — 4 (F-250/F-350 SRW 4x4)
—	●	○	○	LT275/65R20 all-terrain OWL tires — 4 (F-250/F-350 SRW 4x4)
●	●	—	●	LT275/65R18 all-season BSW tires — 5 (F-350 SRW 4x2)
○	●	—	●	LT275/70R18 all-season BSW tires — 5 (F-350 SRW 4x4)
●	●	—	●	LT245/75R17 all-season BSW tires — 7 (F-350 DRW)
○	○	—	○	LT245/75R17 all-terrain BSW tires — 7 (F-350 DRW)
—	○	—	○	LT245/75R17 all-terrain OWL tires — 4 (F-350 DRW)
●	●	—	●	225/70R19.5 all-season BSW tires — 7 (F-450)
○	○	—	○	225/70R19.5 traction tires — 4 (F-450; 4x4 only)
○	○	○	○	Alternator — Single, extra-heavy-duty 200-amp (diesel engine only)
○	○	○	○	Alternators — Dual, 320-amp total (diesel engine only)
○	○	○	○	Engine block heater (standard in 15 cold-weather states)

XL				
XLT				
CABELA'S®				
LARIAT				
MECHANICAL (continued)				
○	○	○	○	Higher-ratio rear axle (restrictions apply)
○	●	●	○	Integrated Trailer Brake Controller (standard on F-450)
●	●	●	●	Limited-slip rear axle
●	●	●	●	Power TakeOff (PTO) provision — Optional on 6.4L diesel with automatic transmission (included with man. trans.)
●	○	●	●	Reverse Vehicle Aid Sensor (n/a with pickup box delete or man. trans.) ¹
○	○	○	○	Traction Control
SEATING				
●	—	—	—	Front full bench with reclining seat — HD vinyl
○	—	—	—	Front full bench with reclining seat — HD cloth
○	●	—	○	Front seat — 40/20/40 split with armrest, cupholders and storage (XL — HD vinyl or cloth; XLT — premium cloth; LARIAT — leather-trimmed)
—	○	—	—	Front seat — Leather-trimmed 40/20/40 split with armrest, cupholders and storage
○	—	—	—	Front bucket seats — HD vinyl or HD cloth
—	○	●	—	Front cloth seats with center console
—	—	○	●	Front leather-trimmed seats with center console
●	●	○	○	Rear folding bench seat (SuperCab and XL Crew Cab; XL — HD vinyl or cloth; XLT — premium cloth or premium vinyl; Cabela's — cloth or leather-trimmed; LARIAT — premium vinyl)
—	●	●	●	Rear FlexFold® 60/40 split fold-flat seat, steel loadfloor, bag hooks, dual integrated cupholders and tray, and 2 outboard head restraints (Crew Cab; XLT — premium cloth or leather-trimmed; Cabela's — cloth or leather-trimmed; LARIAT — leather-trimmed)
—	—	●	●	Heated seats — Driver and front-passenger, 2 settings (requires leather trim)
—	●	—	—	Lumbar support — Driver only
—	—	●	●	Lumbar support — Driver and front-passenger
—	●	●	●	Power 6-way driver seat (and front-passenger seat on SuperCab and Crew Cab)
INTERIOR				
●	●	●	●	Accessory delay for power features ²
●	●	●	—	Air conditioning — Manual
—	—	●	●	Air conditioning — Dual-zone Electronic Automatic Temperature Control ¹
●	—	—	—	AM/FM stereo/digital clock with 2 speakers
●	●	●	●	AM/FM stereo/single-CD player with MP3 capability, digital clock and 4 speakers
—	○	○	●	AM/FM stereo/6-disc in-dash CD changer with MP3 capability, digital clock and 4 speakers (leather-wrapped steering wheel with secondary audio controls on XLT and Cabela's) ¹

XL				
XLT				
CABELA'S®				
LARIAT				
INTERIOR (continued)				
—	—	○	●	Premium Sound System AM/FM stereo/6-disc in-dash CD changer with MP3 capability, digital clock and 8 speakers with subwoofer (leather-wrapped steering wheel with secondary audio controls on Cabela's; n/a with Navigation System)
—	—	●	●	Navigation System with Premium Sound System AM/FM stereo/single-disc CD player with MP3 capability, USB port, in-dash touch screen, voice-activated controls, digital clock and 8 speakers with subwoofer (requires Ford SYNC®)
—	●	●	●	Ford SYNC voice-activated, in-vehicle communications and entertainment system ¹ (requires audio system with CD player)
●	●	●	●	SIRIUS Satellite Radio with 6-month trial subscription (requires CD system; n/a on Regular Cab)
●	●	●	●	Auxiliary audio input jack (requires CD)
●	●	●	●	Cruise control (requires tilt steering wheel)
—	—	●	●	Enhanced message center — Message center, plus trip computer with compass, distance to empty, average fuel economy, autolamp configuration and status, system check, and language selection
●	●	—	—	Floor covering — Black vinyl
—	●	●	●	Floor covering — Color-coordinated carpet
—	●	—	●	Floor mats — Color-coordinated carpet
—	○	●	○	Floor mats — Black all-weather
●	●	—	—	Instrument cluster — Black with black gauges
—	—	●	●	Instrument cluster — Metallic-faced with cream gauges ¹
●	●	●	—	Mirror — Day/night rearview
—	●	●	●	Mirror — Auto-dimming rearview with compass
—	—	●	●	Overhead console — Includes sunglasses storage and garage door opener storage
●	●	●	●	Power door locks ²
●	●	●	●	Power windows with one-touch-down driver-window feature ²
○	○	○	○	Rapid-Heat Supplemental Cab Heater (requires diesel engine with air conditioning and alternator upgrade)
—	○	○	○	Rear View Camera (requires SYNC)
—	○	○	○	Steering wheel — Black leather-wrapped
—	●	●	●	Steering wheel — Color-coordinated leather-wrapped with secondary audio controls ¹
●	●	●	●	Steering wheel — Tilt
○	○	○	○	Upfitter switches (4) — Located on instrument panel
●	●	—	—	Visors with passenger mirror
—	—	●	—	Visors with driver and passenger mirrors
—	—	●	●	Visors with illuminated driver and passenger mirrors ³
—	—	●	●	Woodgrain-style instrument panel accents

● Standard ● Select Availability ○ Optional — Not Available

¹Included with Cabela's Luxury Package. ²Included as part of Power Equipment Group on XL.

³Included on Cabela's with moonroof.

PICKUP FEATURES & OPTIONS

XL				
XLT				
CABELA'S®				
LARIAT				
EXTERIOR				
—	●	●	●	Autolamp with rainlamp feature (included with XLT Convenience Package)
—	○	○	○	Bodyside moldings — Body-color (SRW only)
●	—	—	—	Bumpers — Black-painted with grained top cover
●	●	—	●	Bumpers — Chrome with grained top cover ¹
—	—	●	—	Bumpers — Dark Shadow Grey-painted with grained top cover
○	—	—	—	Cab steps — Black molded (standard on all trims of F-450)
○	○	○	○	Cab steps — 5" chrome tubular (SuperCab and Crew Cab only)
—	●	●	●	Fog lamps
●	—	—	—	Grille — Black-painted bar-style
—	●	—	●	Grille — Chrome bar-style w/Medium Platinum insert
—	—	●	—	Grille — Body-color surround w/billet-style Medium Platinum insert
●	—	—	—	Headlamps — Sealed-beam halogen
●	●	●	●	Headlamps — Dual-beam jewel-effect ¹
●	●	●	●	Lamp — Underhood engine-compartment ¹
●	—	—	—	Mirrors — Manually telescoping trailer tow with 2-way fold and manual glass
●	●	—	—	Mirrors — Manually telescoping trailer tow with 2-way fold, power/heated glass, heated manual spotter mirrors, and integrated clearance lamps and turn signals
—	●	●	●	Mirrors — PowerScope™ power-telescoping/-folding trailer tow with power/heated glass, heated manual spotter mirrors, and integrated clearance lamps and turn signals (XLT requires XLT Convenience Group)
—	—	○	○	Moonroof — Power-sliding (Crew Cab only) ²
●	●	—	—	Pickup box delete (F-250/F-350 only; requires 8' box; n/a with 6.8L engine or Rear View Camera)
—	●	●	●	Privacy glass (rear doors and rear window)
○	○	○	○	Roof clearance lamps (standard on DRW)
●	●	●	●	Skid plates — Transfer case and fuel tank (included with FX4 OFF-ROAD Package on XL, XLT and LARIAT)
●	○	○	—	Sliding rear window — Manual
—	—	●	●	Sliding rear window — Power with privacy glass ³
—	○	○	○	Stowable bed extender (F-250/F-350 SRW only)
○	○	○	○	Tailgate Step — Includes step, Tailgate Assist and grab bar
○	○	○	○	ToughBed® spray-in bedliner — Includes tailgate guard and black bed bolts (available Fall 2009)
—	—	●	○	Two-tone paint — Lower-accent
—	—	●	●	Wheel-lip moldings — Dark Shadow Grey on Cabela's; accent-color on LARIAT with optional two-tone paint (SRW only)
FORD WORK SOLUTIONS™				
○	○	○	—	In-dash Windows® CE computer with touch screen (restrictions apply)
○	○	○	○	Cable Lock by Master Lock® (replaces cargo tie-down hooks)
○	○	○	—	Crew Chief™ (n/a with SYNC or in-dash computer)
○	○	○	—	Tool Link™ (requires in-dash computer; restrictions apply)

XL				
XLT				
CABELA'S®				
LARIAT				
PACKAGES				
●	○	○	○	10,000-lb. GVWR Package (F-350 SRW)
○	○	○	○	Camper Package — Includes front springs upgrade (unless maximum springs have been computer-selected as included equipment); rear stabilizer bar (SRW); slide-in-camper certification; and auxiliary rear springs on F-250
—	○	—	○	Chrome Package — Includes unique all-chrome billet-style grille; chrome exhaust tip; chrome tow hooks; unique chrome mirror caps; chrome cargo tie-down hooks; and 6" chrome angular step bars (requires PowerScope mirrors; SuperCab and Crew Cab only; other restrictions apply)
—	●	●	—	Driver's Group — Includes leather-wrapped steering wheel with secondary audio controls and auto-dimming rearview mirror (requires SYNC)
○	○	—	○	FX4 OFF-ROAD Package — Includes transfer case and fuel tank skid plates; Rancho® shocks; and FX4 OFF-ROAD box decals (requires 4x4, limited-slip rear axle and all-terrain tires)
○	○	—	○	Heavy-Service Suspension Package — Includes front springs upgrade (unless maximum springs have been computer-selected as included equipment)
○	●	●	●	Power Equipment Group — Includes power door locks, heated sideview mirrors and front windows (plus rear on Crew Cab) with one-touch-down driver-window feature; accessory delay; remote keyless entry; and perimeter anti-theft alarm
—	—	●	○	Rear-Seat DVD Entertainment System — Includes roof-mounted DVD system with 8" video screen; 2 sets of wireless headphones; and a remote control (n/a with moonroof; Crew Cab only; requires SYNC; Cabela's requires Cabela's Luxury Package)
○	○	○	○	Snow Plow Prep Package — Includes computer-selected springs for snow plow application; 200-amp. alternator; and heavy-duty alternator with gas engines (4x4 only; restrictions apply)
○	○	○	○	TowBoss Package — Includes 4.10 limited-slip rear axle and increased GCWR to 26,000 lbs. (F-350 DRW only; requires 6.4L diesel engine, auto. trans. and integrated Trailer Brake Controller)
○	—	—	—	XL Décor Group — Includes chrome bumpers with grained top cover; dual-beam jewel-effect headlamps; bright-chrome hub covers and center ornaments (SRW only); and underhood engine-compartment lamp
○	—	—	—	XL Plus Package — Includes AM/FM stereo/single-CD player with MP3 capability, digital clock and 4 speakers; cruise control; and tilt steering wheel
—	○	—	—	XLT Convenience Package — Includes power driver seat, fog lamps, power-adjustable pedals, automatic headlamps with rainlamp feature, autolock/auto unlock, and SecuriCode™ keyless-entry keypad (requires auto. trans.)
—	—	●	—	Cabela's Additional Features — Custom molded mud flaps; Cabela's box decals and tailgate badge; Cabela's logo bed mat (n/a with ToughBed); 6" angular painted tubular step bars; unique hub caps with center ornaments; unique cloth seats with stitched Cabela's logo on seatbacks; rear FlexFold 60/40 split fold-flat seat with lockable underseat storage; and center floor console with lockable storage (Crew Cab SRW with auto. trans. only; n/a with Chrome Package, Nav. or DVD)

XL				
XLT				
CABELA'S®				
LARIAT				
PACKAGES (continued)				
—	—	○	—	Cabela's Luxury Package — Adds to Cabela's content: SYNC; leather-wrapped steering wheel with SYNC controls; Dual-zone Electronic Automatic Temperature Control; Reverse Vehicle Aid Sensor; power-sliding rear window; memory PowerScope mirrors; memory power driver seat; message center and trip computer; memory power-adjustable pedals; AM/FM stereo with 6-disc CD/MP3 capability; and heated leather-trimmed front seats with stitched Cabela's logo on seatbacks (Crew Cab SRW)
—	—	—	○	Ford Harley-Davidson™ F-Series Super Duty® Package — Includes standard Black monotone or optional Black with painted Tuxedo Black Flames; dimensional chrome boxside lettering (requires optional painted flames); body-color front and rear bumpers; billet-style grille insert with body-color surround; blacked-out headlamps; PowerScope trailer tow mirrors with body-color mirror caps; 20" polished/painted forged-aluminum wheels; 19.5" polished forged-aluminum wheels (F-450 only); laser-engraved serialization plate; front leather-trimmed center console; unique Black leather-trimmed front seats and rear FlexFold 60/40 split fold-flat seat with chrome Bar & Shield badges; Premium Sound System with AM/FM stereo/6-disc in-dash CD changer; Rear View Camera; Universal Garage Door Opener; and much more (restrictions apply; diesel engine only)
—	—	—	○	KING RANCH — Includes Pueblo Gold two-tone paint; unique chrome grille with accent-color insert; accent-color front bumper; accent-color illuminated tubular cab steps; accent-color rear bumper with step pad; PowerScope trailer tow mirrors with body-color mirror caps; unique 18" painted forged polished-aluminum wheels; forged polished-aluminum wheels (DRW); heated front seats; front console with KING RANCH Chaparral leather-trimmed lid/armsrests; front seats and rear FlexFold 60/40 split fold-flat seat with unique KING RANCH Chaparral leather trim; Premium Sound System with AM/FM stereo/6-disc in-dash CD changer; Rear View Camera; Universal Garage Door Opener; and much more
—	—	—	○	KING RANCH with Chrome Package — Includes KING RANCH Package, plus: chrome exhaust tip; chrome tow hooks; unique chrome mirror caps; chrome cargo tie-down hooks; and 6" chrome angular step bars (requires Crew Cab with auto. trans.)
—	—	—	○	LARIAT Plus Package — Includes AM/FM stereo/6-disc in-dash CD changer; memory power driver seat; memory power trailer tow mirrors; memory power-adjustable pedals; Rear View Camera; and Universal Garage Door Opener (restrictions apply)
—	—	—	○	LARIAT Ultimate Package — Includes memory power driver seat; memory power trailer tow mirrors; memory power-adjustable pedals; moonroof; Navigation System; Rear View Camera; Tailgate Step; and Universal Garage Door Opener (requires auto. trans.; restrictions apply)

● Standard ● Select Availability ○ Optional — Not Available

¹Included as part of the XL Décor Group. ²Not available with Rear-Seat DVD Entertainment System.

³Included with Cabela's Luxury Package.

PICKUP CONVENTIONAL TOWING – Maximum Loaded Trailer Weight Ratings (lbs.)

MANUAL TRANSMISSION			REGULAR CAB				SUPERCAB				CREW CAB					
ENGINE	AXLE RATIO	GCWR (LBS.)	F-250/ F-350 SRW 4x2	F-350 DRW 4x2	F-250/ F-350 SRW 4x4	F-350 DRW 4x4	F-250/ F-350 SRW 4x2	F-350 DRW 4x2	F-250/ F-350 SRW 4x4	F-350 DRW 4x4	F-250/ F-350 SRW 4x2	F-350 DRW 4x2	F-450 DRW 4x2	F-250/ F-350 SRW 4x4	F-350 DRW 4x4	F-450 DRW 4x4
5.4L 3-Valve V8	3.73	15,000	9200	—	8800	—	—	—	8500	—	—	—	—	8300	—	—
	4.10LS	17,000	11,200	—	10,800	—	—	—	10,500	—	—	—	—	10,300	—	—
6.8L 3-Valve V10	4.10LS	20,000	12,500	—	12,500	—	—	—	12,500	—	—	—	—	12,500	—	—
	4.30LS	22,000	12,500	—	12,500	—	—	—	12,500	—	—	—	—	12,500	—	—
6.4L Power Stroke® V8 Turbo Diesel	3.55	23,000	—	—	12,500	—	—	—	12,500	—	—	—	—	12,500	—	—
	3.73	23,500	—	—	—	15,000	—	—	—	15,000	—	—	—	—	15,000	—
	4.10LS	23,500	—	—	—	15,000	—	—	—	15,000	—	—	—	—	15,000	—
	4.30LS	27,000	—	—	—	—	—	—	—	—	—	—	—	—	—	16,000

AUTOMATIC TRANSMISSION			REGULAR CAB				SUPERCAB				CREW CAB					
ENGINE	AXLE RATIO	GCWR (LBS.)	F-250/ F-350 SRW 4x2	F-350 DRW 4x2	F-250/ F-350 SRW 4x4	F-350 DRW 4x4	F-250/ F-350 SRW 4x2	F-350 DRW 4x2	F-250/ F-350 SRW 4x4	F-350 DRW 4x4	F-250/ F-350 SRW 4x2	F-350 DRW 4x2	F-450 DRW 4x2	F-250/ F-350 SRW 4x4	F-350 DRW 4x4	F-450 DRW 4x4
5.4L 3-Valve V8	3.73	16,000	10,200	—	9800	—	10,000	—	9500	—	9700	—	—	9300	—	—
	4.10LS	18,000	12,200	—	11,800	—	12,000	—	11,500	—	11,700	—	—	11,300	—	—
6.8L 3-Valve V10	4.10LS	21,000	12,500	—	12,500	—	12,500	—	12,500	—	12,500	—	—	12,500	—	—
	4.30LS	22,500	12,500	—	12,500	—	12,500	—	12,500	—	12,500	—	—	12,500	—	—
6.4L Power Stroke V8 Turbo Diesel	3.31	23,000	12,500	—	12,500	—	12,500	—	12,500	—	12,500	—	—	12,500	—	—
	3.55	23,000	12,500	—	12,500	—	12,500	—	12,500	—	12,500	—	—	12,500	—	—
	3.73	23,500	—	15,000	—	15,000	—	15,000	—	15,000	—	15,000	—	—	15,000	—
	4.10LS ¹	26,000	—	15,000	—	15,000	—	15,000	—	15,000	—	15,000	—	—	15,000	—
	4.30LS	33,000	—	—	—	—	—	—	—	—	—	—	16,000	—	—	16,000

Maximum capabilities shown are for properly equipped vehicles with required equipment and a 150-lb. driver. Weight of additional options, equipment, passengers and cargo must be deducted from this weight. For additional information, see your Ford Dealer.

Conventional Towing Notes: This information also applies to models with Pickup Box Delete option (66D). Trailer tongue load weight should be 10-15% of total loaded trailer weight. Make sure that the vehicle payload (reduced by option weight) will accommodate trailer tongue load weight and the weight of passengers and cargo added to the towing vehicle. The addition of trailer tongue load weight, and the weight of passengers and cargo, cannot cause vehicle weights to exceed the rear GAWR (Gross Axle Weight Rating) or GVWR (Gross Vehicle Weight Rating). These ratings can be found on the vehicle's Safety Compliance Certification Label. For F-250/F-350 SRW models, F-250 trailer weights are shown; F-350 trailer weights are within 200 lbs. Check with your sales consultant.

PICKUP MECHANICAL SPECIFICATIONS

FRONT SUSPENSION

Type	Twin-I-Beam (F-250/F-350 4x2); solid Twin-Coil Monobeam axle (F-250/F-350 4x4, F-450 4x2 and 4x4)
Axle (rating @ ground)	5250 lbs. (F-250/F-350 4x2); 6000 lbs. (F-250/F-350 4x4); 7000 lbs. (F-450)
Springs	Coil
Shock absorbers	1 ³ / ₈ " gas type
Stabilizer bar	Standard

REAR SUSPENSION

Type	Solid axle
Axle (rating @ ground)	6100 lbs. (F-250); 7050 lbs. (F-350 SRW); 9000 lbs. (F-350 DRW); 11,000 lbs. (F-450)
Springs	Leaf
Shock absorbers	1 ³ / ₈ " gas type
Stabilizer bar	Standard on DRW pickup; optional in package on SRW pickup

STEERING

Assist	Power
Overall ratio	20.35:1 (F-250/F-350 4x2); 19.77:1 (F-250/F-350 4x4); 20.38:1 average (F-450)

BRAKES

Type	4-wheel vented-disc ABS (standard)
Front (rotor diameter)	13.66" (F-250/F-350); 14.53" (F-450)
Rear (rotor diameter)	13.39" (F-250/F-350); 15.35" (F-450)

WHEELS

Type	Steel or aluminum
Size	17", 18" or 20" (F-250/F-350); 19.5" (F-450)
Number of studs	8 (F-250/F-350); 10 (F-450)
Bolt-circle diameter	6.7" (170-mm) SRW; 7.87" (200-mm) F-350 DRW; 8.85" (225-mm) F-450

POWERTRAINS

ENGINE	4x4 TRANSFER CASE	6-SPEED MANUAL	TOROSHIFT® 5-SPEED AUTOMATIC ²
5.4L 3-Valve SEFI V8	2-speed	●	●
6.8L 3-Valve SEFI V10	2-speed	●	●
6.4L Power Stroke V8 Turbo Diesel	2-speed	●	●

● Available

¹Available with TowBoss Package only. ²Standard on Cabela's®, LARIAT and F-350 DRW.

PICKUP 5TH-WHEEL TOWING — Maximum Loaded Trailer Weight Ratings (lbs.)

MANUAL TRANSMISSION			REGULAR CAB				SUPERCAB				CREW CAB					
ENGINE	AXLE RATIO	GCWR (LBS.)	F-250/ F-350 SRW 4x2	F-350 DRW 4x2	F-250/ F-350 SRW 4x4	F-350 DRW 4x4	F-250/ F-350 SRW 4x2	F-350 DRW 4x2	F-250/ F-350 SRW 4x4	F-350 DRW 4x4	F-250/ F-350 SRW 4x2	F-350 DRW 4x2	F-450 DRW 4x2	F-250/ F-350 SRW 4x4	F-350 DRW 4x4	F-450 DRW 4x4
5.4L 3-Valve V8	3.73	15,000	9200	—	8800	—	—	—	8500	—	—	—	—	8300	—	—
	4.10LS	17,000	11,200	—	10,800	—	—	—	10,500	—	—	—	—	10,300	—	—
6.8L 3-Valve V10	4.10LS	20,000	14,000	—	13,600	—	—	—	13,400	—	—	—	—	13,100	—	—
	4.30LS	22,000	16,000	—	15,600	—	—	—	15,400	—	—	—	—	15,100	—	—
6.4L Power Stroke® V8 Turbo Diesel	3.55	23,000	—	—	15,800	—	—	—	15,500	—	—	—	—	15,300	—	—
	3.73	23,500	—	—	—	15,800	—	—	—	15,500	—	—	—	—	15,200	—
	4.10LS	23,500	—	—	—	15,800	—	—	—	15,500	—	—	—	—	15,200	—
	4.30LS	27,000	—	—	—	—	—	—	—	—	—	—	—	—	—	18,200

AUTOMATIC TRANSMISSION			REGULAR CAB				SUPERCAB				CREW CAB					
ENGINE	AXLE RATIO	GCWR (LBS.)	F-250/ F-350 SRW 4x2	F-350 DRW 4x2	F-250/ F-350 SRW 4x4	F-350 DRW 4x4	F-250/ F-350 SRW 4x2	F-350 DRW 4x2	F-250/ F-350 SRW 4x4	F-350 DRW 4x4	F-250/ F-350 SRW 4x2	F-350 DRW 4x2	F-450 DRW 4x2	F-250/ F-350 SRW 4x4	F-350 DRW 4x4	F-450 DRW 4x4
5.4L 3-Valve V8	3.73	16,000	10,200	—	9800	—	10,000	—	9500	—	9700	—	—	9300	—	—
	4.10LS	18,000	12,200	—	11,800	—	12,000	—	11,500	—	11,700	—	—	11,300	—	—
6.8L 3-Valve V10	4.10LS	18,500	—	12,200	—	11,800	—	11,800	—	11,400	—	11,600	—	—	11,200	—
		21,000	15,000	—	14,600	—	14,800	—	14,400	—	14,600	—	—	14,100	—	—
	4.30LS	23,000	—	16,600	—	16,100	—	16,200	—	15,800	—	16,000	—	—	15,500	—
		22,500	16,500	—	16,100	—	16,300	—	16,300	—	16,100	—	—	15,600	—	—
6.4L Power Stroke V8 Turbo Diesel	3.31	23,000	16,300	—	15,800	—	16,000	—	15,500	—	15,800	—	—	15,300	—	—
		23,000	16,300	—	15,800	—	16,000	—	15,500	—	15,800	—	—	15,300	—	—
	3.73	23,500	—	16,300	—	15,800	—	15,900	—	15,500	—	15,700	—	—	15,200	—
	4.10LS ²	26,000	—	18,800	—	18,300	—	18,400	—	18,000	—	18,200	—	—	17,700	—
	4.30LS	33,000	—	—	—	—	—	—	—	—	—	—	24,600	—	—	24,200

5th-Wheel Towing Notes: This information also applies to models with Pickup Box Delete option (66D). Trailer kingpin weight should be 15–25% of total loaded trailer weight. Make sure that the vehicle payload (reduced by option weight) will accommodate trailer kingpin weight and the weight of passengers and cargo added to the towing vehicle. The addition of trailer kingpin weight, and the weight of passengers and cargo, cannot cause vehicle weights to exceed the rear GAWR (Gross Axle Weight Rating) or GVWR (Gross Vehicle Weight Rating). These ratings can be found on the vehicle's Safety Compliance Certification Label. For F-250/F-350 SRW models, F-250 trailer weights are shown; F-350 trailer weights are within 200 lbs. Check with your sales consultant.

¹Available with F-350 SRW only. ²Available with TowBoss Package only.

Quiet Steel is a registered trademark of Material Sciences Corporation.

Microsoft is a registered trademark of Microsoft Corporation.

The Bluetooth word mark is a trademark of the Bluetooth SIG, Inc.

Windows is a registered trademark of Microsoft Corporation.

DeWALT is a registered trademark of DeWALT Industrial Tool Company used under license.

Garmin is a registered trademark of Garmin Ltd.

Master Lock is a registered trademark of Master Lock Company LLC.

Microlise Group Limited is a company registered in England and Wales with company number 1670983.

Sprint and the logo are trademarks of Sprint. Sprint Mobile Broadband Network reaches over 249 million people. Coverage not available everywhere. See Sprint.com/coverage for details.

New Vehicle Limited Warranty. We want your Ford F-Series Super Duty ownership experience to be the best it can be. So under this warranty, your new vehicle comes with 3-year/36,000-mile Bumper-to-Bumper Coverage, 5-year/60,000-mile Powertrain Warranty Coverage, 5-year/50,000-mile Safety Restraint Coverage, and 5-year/unlimited-mile Corrosion (Perforation) Coverage — all with no deductible. The Power Stroke diesel engine gets 5-year/100,000-mile Warranty Coverage. Please ask your Ford Dealer for a copy of this limited warranty.

Roadside Assistance. Covers your vehicle for 5 years or 60,000 miles, so you have the security of knowing that help may be only a phone call away should you run out of fuel, lock yourself out of the vehicle, or need towing. Your Ford Dealer can provide complete details on all of these advantages.

Ford Credit. Get the ride you want. Whether you plan to lease or finance, you'll find the choices that are right for you at Ford Credit. Ask your Ford Dealer for details or check us out at fordcredit.com.

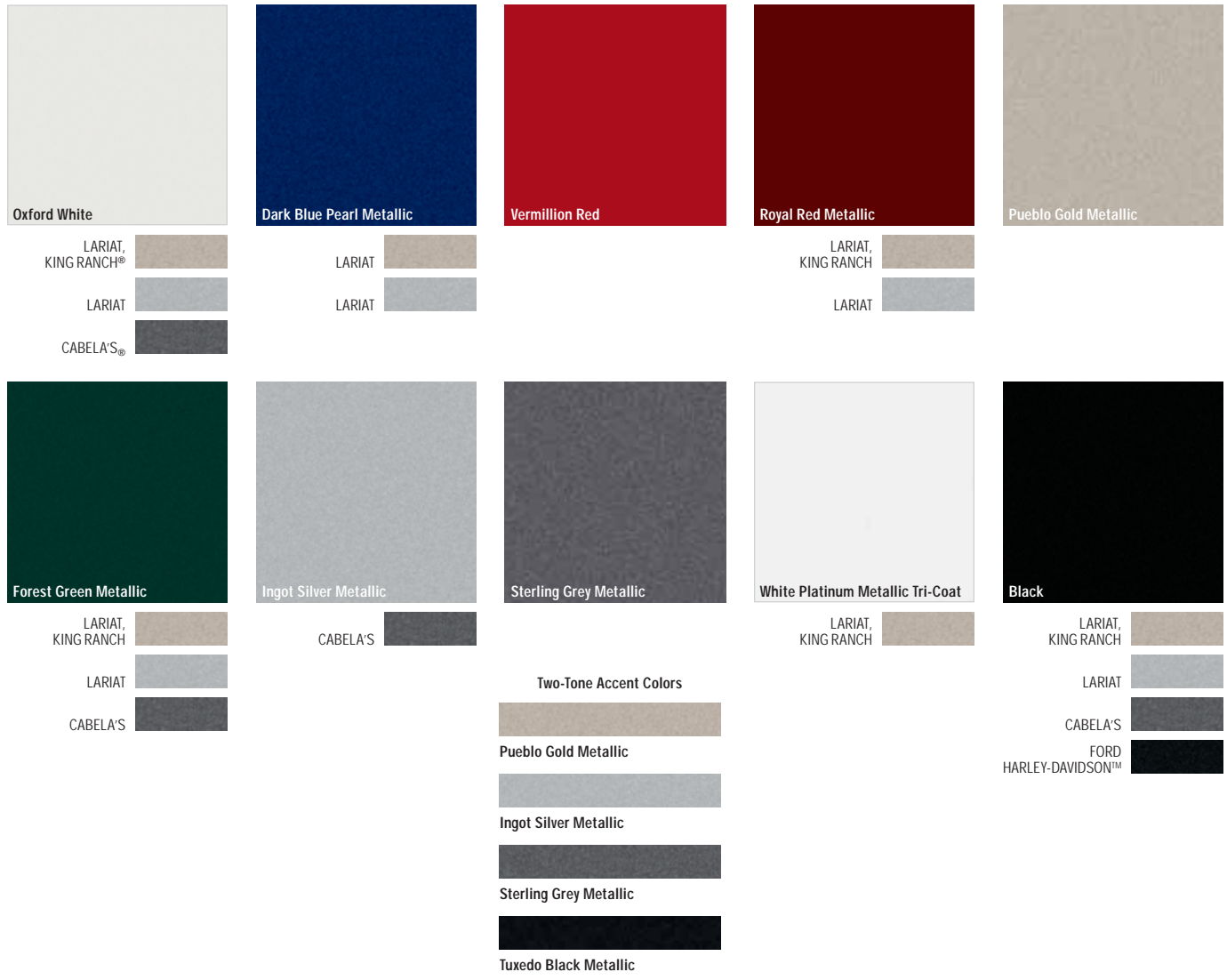
Ford Extended Service Plan. For a purchase or lease, the Ford Extended Service Plan (ESP) gives you "Peace-of-Mind" protection designed to cover key vehicle components and protect you from the cost of unexpected repairs. Ask your dealer for a Ford ESP, the only service contract backed exclusively by Ford and honored at all Ford dealerships.

Insurance Services. Get Ford Motor Company quality in your auto insurance. Our program offers industry-leading benefits and competitive rates. Call 1-877-367-3847, or visit us at fordvip.com for a no-obligation quote. Insurance offered by American Road Services Company (in CA, American Road Insurance Agency), a licensed agency and subsidiary of Ford Motor Company.

Comparisons based on 2009 competitive models (Pickup class is Full-size Pickups over 8500 lbs. GVWR; Chassis Cab class is Traditional Chassis Cab trucks under 22,000 lbs. GVWR), publicly available information and Ford certification data at time of release. Some features discussed may be optional. Vehicles shown may contain optional and aftermarket upfit equipment. Features shown may be offered only in combination with other options or subject to additional ordering requirements or limitations. Dimensions and capability ratings shown may vary due to optional features and/or production variability. Following release of the PDF, certain changes in standard equipment, options and the like, or product delays may have occurred which would not be included in these pages. Your Ford Dealer is the best source for up-to-date information. Ford Division reserves the right to change product specifications at any time without incurring obligations. Body manufacturers are responsible for compliance certification of the completed vehicle. The Ford New Vehicle Limited Warranty and any government certification made by Ford shall cover only the vehicle as manufactured by Ford and shall not extend to any addition, modification or change of or to the vehicle by the Ford Authorized Pool Account.

EXTERIOR COLORS

COLORS



	Interior Colors	Two-Tone Accent Colors (Pickups Only)
XL		
Oxford White	● ●	
Dark Blue Pearl Metallic	● ●	
Vermillion Red	● ●	
Forest Green Metallic	● ●	
Ingot Silver Metallic	●	
Sterling Grey Metallic	●	
Black	● ●	
XLT		
Oxford White	● ●	
Dark Blue Pearl Metallic	● ●	
Vermillion Red	● ●	
Royal Red Metallic	● ●	
Pueblo Gold Metallic	● ●	
Forest Green Metallic	● ●	
Ingot Silver Metallic	●	
Sterling Grey Metallic	●	
Black	● ●	
LARIAT		
Oxford White	● ● ●	■ ■
Dark Blue Pearl Metallic	● ● ●	■ ■
Vermillion Red	● ● ●	
Royal Red Metallic	● ● ●	■ ■
Pueblo Gold Metallic	● ● ●	
Forest Green Metallic	● ● ●	■ ■
Ingot Silver Metallic	● ● ●	
Sterling Grey Metallic	● ● ●	
White Platinum Metallic Tri-Coat ¹	● ● ●	■ ■
Black	● ● ●	■ ■

INTERIORS:
 ● Camel ● Medium Stone ● Ebony ● Chaparral

TWO-TONE ACCENT COLORS:
 ■ Pueblo Gold Metallic ■ Ingot Silver Metallic
 ■ Sterling Grey Metallic ■ Tuxedo Black Metallic

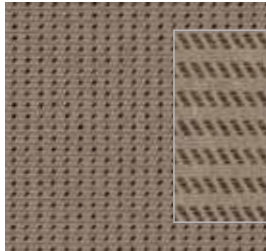
¹Tri-Coat paint is an additional-cost option and other restrictions may apply.
 Colors shown are representative only. Not all colors are available on all models. See your dealer for actual paint/trim options.
 NOTE: Pueblo Gold Two-Tone only available with Camel interior. Ingot Silver Two-Tone only available with Medium Stone interior.

INTERIOR

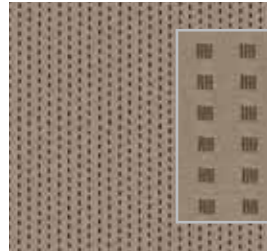
FABRICS & TRIM



HD Vinyl – Camel
Standard on XL



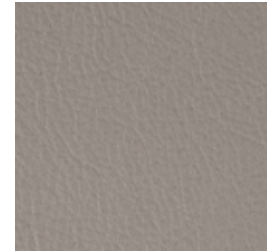
HD Cloth – Camel
Optional on XL



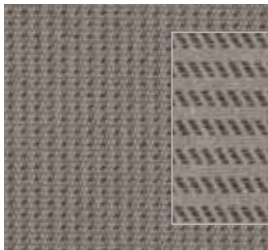
Premium Cloth – Camel
Standard on XLT



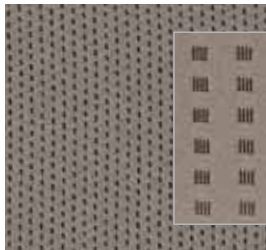
Leather – Camel
Standard on LARIAT, Optional on XLT



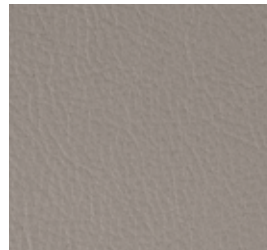
HD Vinyl – Medium Stone
Standard on XL



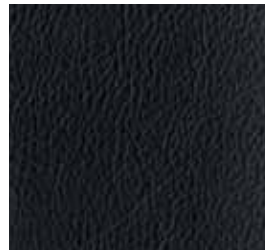
HD Cloth – Medium Stone
Optional on XL



Premium Cloth – Medium Stone
Standard on XLT



Leather – Medium Stone
Standard on LARIAT, Optional on XLT



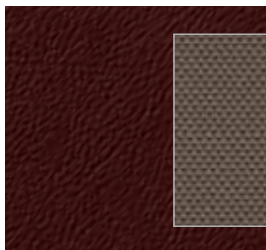
Leather – Ebony
Standard on LARIAT



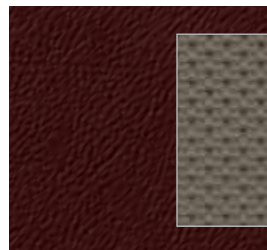
Leather – Chaparral
Standard on KING RANCH



Leather – Ebony
Standard on HARLEY-DAVIDSON Package



Cloth – Dark Rust/Medium Stone
Standard on Cabela's



Leather – Dark Rust/Medium Stone
Optional on Cabela's

	Interior Colors	Two-Tone Accent Colors (Pickups Only)
CABELA'S®		
Oxford White	●	■
Forest Green Metallic	●	■
Ingot Silver Metallic	●	■
Black	●	■
KING RANCH®		
Oxford White	●	■
Royal Red Metallic	●	■
Forest Green Metallic	●	■
White Platinum Metallic Tri-Coat ¹	●	■
Black	●	■

FORD HARLEY-DAVIDSON™ PACKAGE		
Black	●	■
Black with Tuxedo Black Metallic Flames	●	■

INTERIORS:
 ● Medium Stone ● Ebony ● Chaparral

TWO-TONE ACCENT COLORS:
 ■ Pueblo Gold Metallic ■ Sterling Grey Metallic
 ■ Tuxedo Black Metallic

¹Tri-Coat paint is an additional-cost option and other restrictions may apply.

NOTE: Pueblo Gold Two-Tone only available with Camel interior. Ingot Silver Two-Tone only available with Medium Stone interior.

Fabric patterns and colors are subject to change or substitution without notice.

SUPER DUTY WHEELS



17" Argent-Painted Steel
Standard on F-250/F-350 SRW XL



17" 5-Spoke Cast-Aluminum
Standard on F-250 XLT



17" Argent-Painted Steel (DRW)
Standard on F-350 DRW XL & XLT



17" Forged Polished-Aluminum (DRW)
Standard on F-350 DRW LARIAT
Optional on F-350 DRW XLT

17" KING RANCH® Forged Polished-Aluminum (DRW)
Included on F-350 DRW KING RANCH



18" Argent-Painted Steel¹
Optional on F-350 SRW XL



18" Bright Machined Cast-Aluminum
Standard on F-350 SRW XLT
Optional on F-250 XLT



18" Premium Forged-Aluminum
Standard on F-250/F-350 SRW LARIAT



18" Bright Machined Cast-Aluminum
with Cabela's® Center Cap
Standard on
F-250/F-350 SRW Cabela's



18" KING RANCH
Painted Forged Polished-Aluminum
Included on
F-250/F-350 SRW KING RANCH



19.5" Forged Polished-Aluminum (DRW)
Standard on F-450 Pickup



19.5" KING RANCH
Forged Polished-Aluminum
Included on F-450 KING RANCH



19.5" HARLEY-DAVIDSON
Polished Forged-Aluminum (DRW)
Included on F-450 Harley-Davidson™



20" Forged Polished-Aluminum¹
Optional on F-250/F-350 SRW XLT
& LARIAT



20" Forged Polished-Aluminum
with Cabela's Center Cap¹
Optional on
F-250/F-350 SRW Cabela's



20" KING RANCH
Premium Painted Forged-Aluminum¹
Optional on F-250/
F-350 SRW KING RANCH



20" HARLEY-DAVIDSON
Polished/Painted Forged-Aluminum¹
Included on F-250/F-350 SRW
Harley-Davidson™

¹Other restrictions apply.

FORD CUSTOM ACCESSORIES

Also available:

- Remote Start Systems
- Vehicle Security System
- SmartAlert™ GPS Tracking and Recovery
- Side Window Deflectors
- Tonneau Covers:
 - Soft-Folding
 - Hard-Folding
- Bed Rail Protector
- Bed Liners
- Bed Mats
- Sportz® Truck Tent¹
- EchoMaster® HitchScan™ Rear Park Assist and Hitch Step¹
- Wiper Shaker De-Icer and Debris Cleaner¹
- Wheel Locks
- Ashcup/Coin Holder/Smoker's Pack

¹Ford Licensed Accessories.
Garmin is a registered trademark of Garmin Ltd.

To learn more about Ford Custom Accessories and to buy them online, visit fordaccessories.com.

Genuine Ford Accessories will be warranted for whichever provides you the greatest benefit: 12 months or 12,000 miles (whichever occurs first), or the remainder of your Bumper-to-Bumper 3-year/36,000-mile New Vehicle Limited Warranty. Contact your local Ford Dealer for details and a copy of the limited warranty. Ford Licensed Accessories (FLA) are warranted by the accessory manufacturer's warranty. Contact your Ford Dealer for details regarding the manufacturer's limited warranty and/or a copy of the FLA product limited warranty offered by the accessory manufacturer.



Bed Liners w/ Tailgate Liners



Soft Roll-Up Tonneau Covers¹



All-Weather Floor Mats



Keyless Entry Keypad



Electrochromic Mirrors



Step Bars



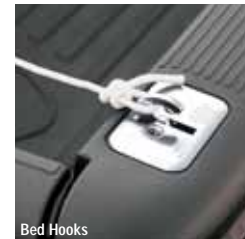
Trailer Hitch Balls/Draw Bars



Bi-Directional Remote Start Systems



Chrome Exhaust Tip



Bed Hooks



Trailer Tow Mirrors



Garmin® Portable Navigation Systems¹



Interior Soft Cargo Cooler Bag



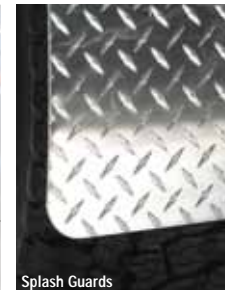
Interior Soft Cargo Organizers (Large and Standard Sizes)



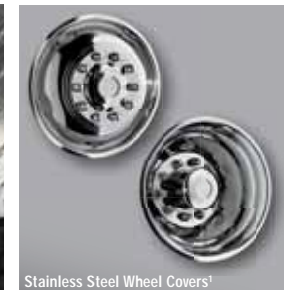
Hood Deflectors (Shown in Chrome)



Stowable Bed Extender



Splash Guards



Stainless Steel Wheel Covers¹